



# PARK WEST



1501-1507 LBJ FREEWAY | DALLAS, TX



## PARK WEST 1&2

### HIGHLIGHTS

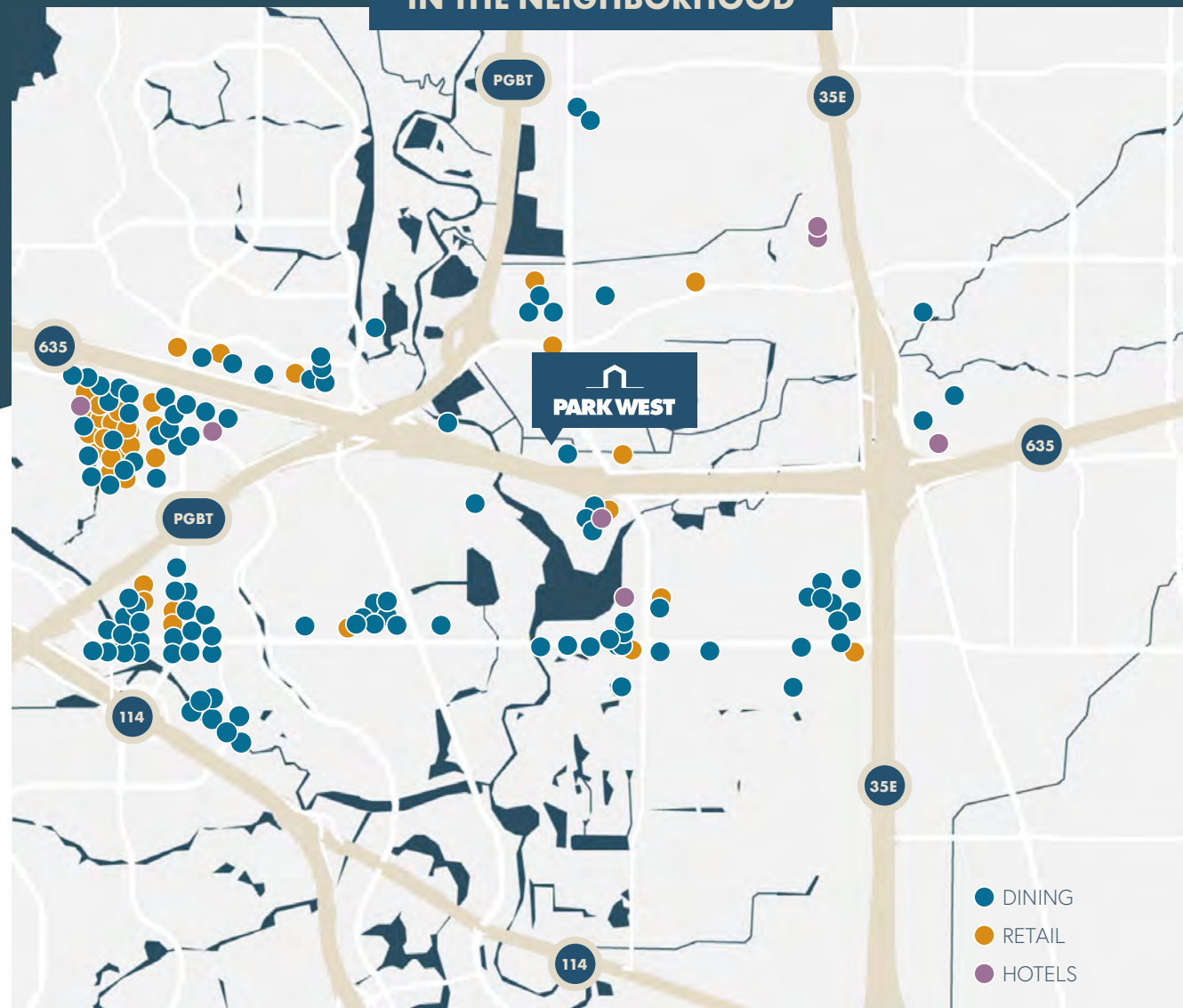
-  4/1000 structured parking (visitor parking available)
-  EV Charging Stations
-  125-person conference room
-  Fitness center with locker rooms
-  Outdoor walking trail
-  On-site cafe serving breakfast and lunch
-  Full coffee bar, proudly serving Starbucks coffee
-  Wi-fi available in common areas
-  Close proximity to dining, retail and hotel options
-  Direct access to LBJ Freeway and PGBT
-  Building and monument signage available (for qualified tenants)

PARK WEST 1 & 2 IS A TWO-BUILDING PROJECT LOCATED AT 1501, 1503, 1505, AND 1507 LBJ FREEWAY (I-635) — MINUTES FROM DFW INTERNATIONAL AIRPORT, DOWNTOWN DALLAS, THE LAS COLINAS BUSINESS DISTRICT, AND NUMEROUS AMENITIES.



Area  
**AMENITIES**

**IN THE NEIGHBORHOOD**

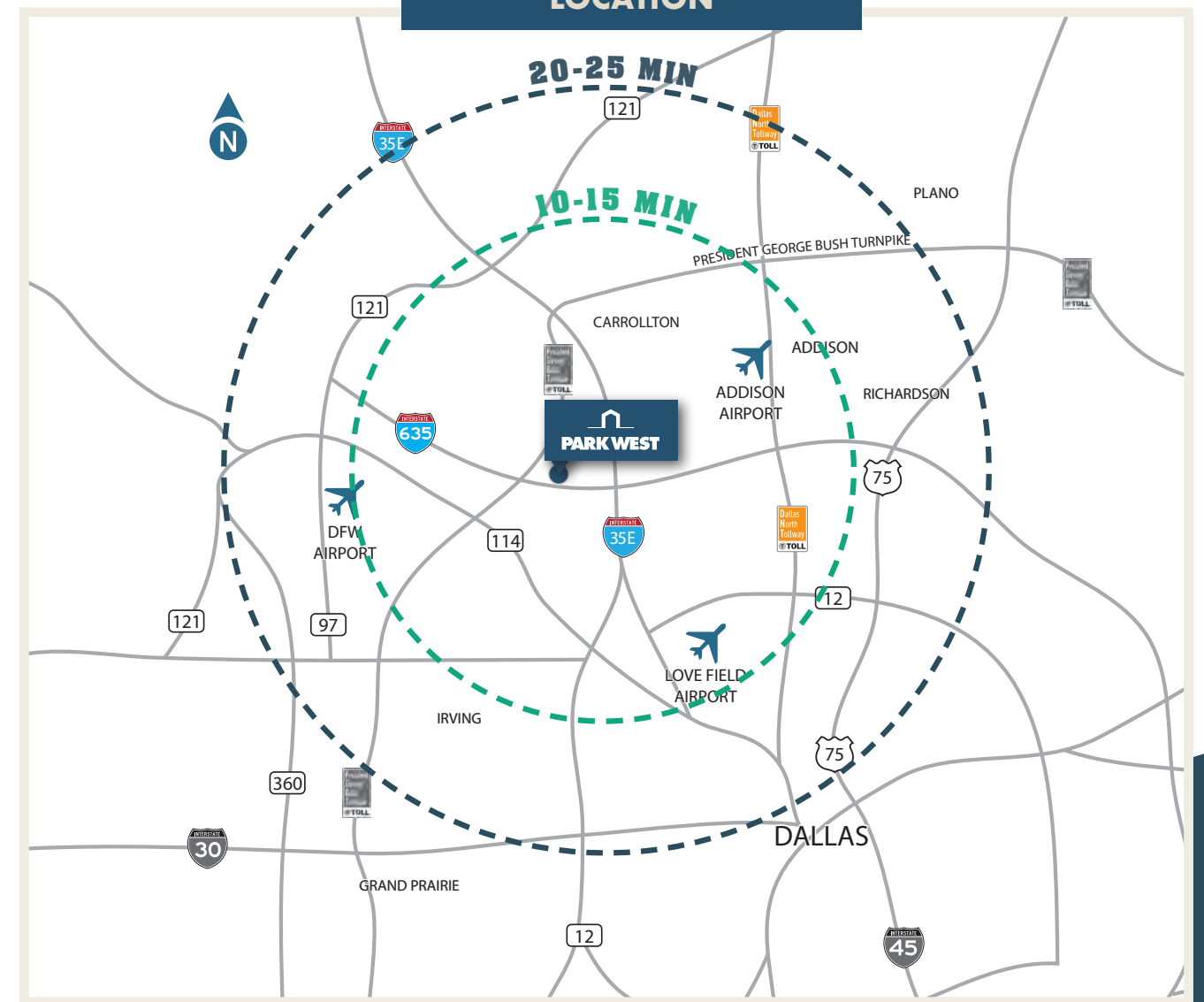


**75+**  
DINING

**30+**  
RETAIL

**10+**  
HOTELS

**LOCATION**



CENTRAL DFW LOCATION

10-15 MINUTES FROM MAJOR AIRPORTS

CORNER OF I-635, PGBT AND I-35



New  
**RENOVATIONS**

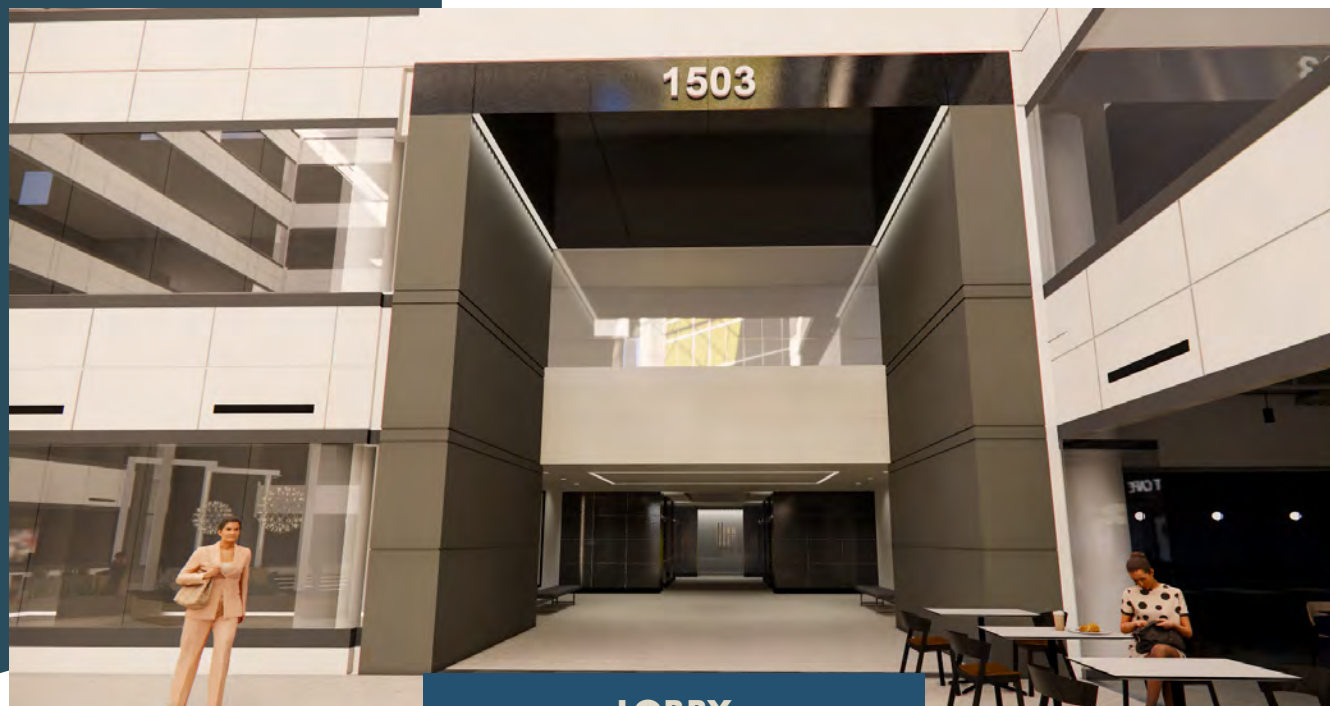
**COURTYARD**



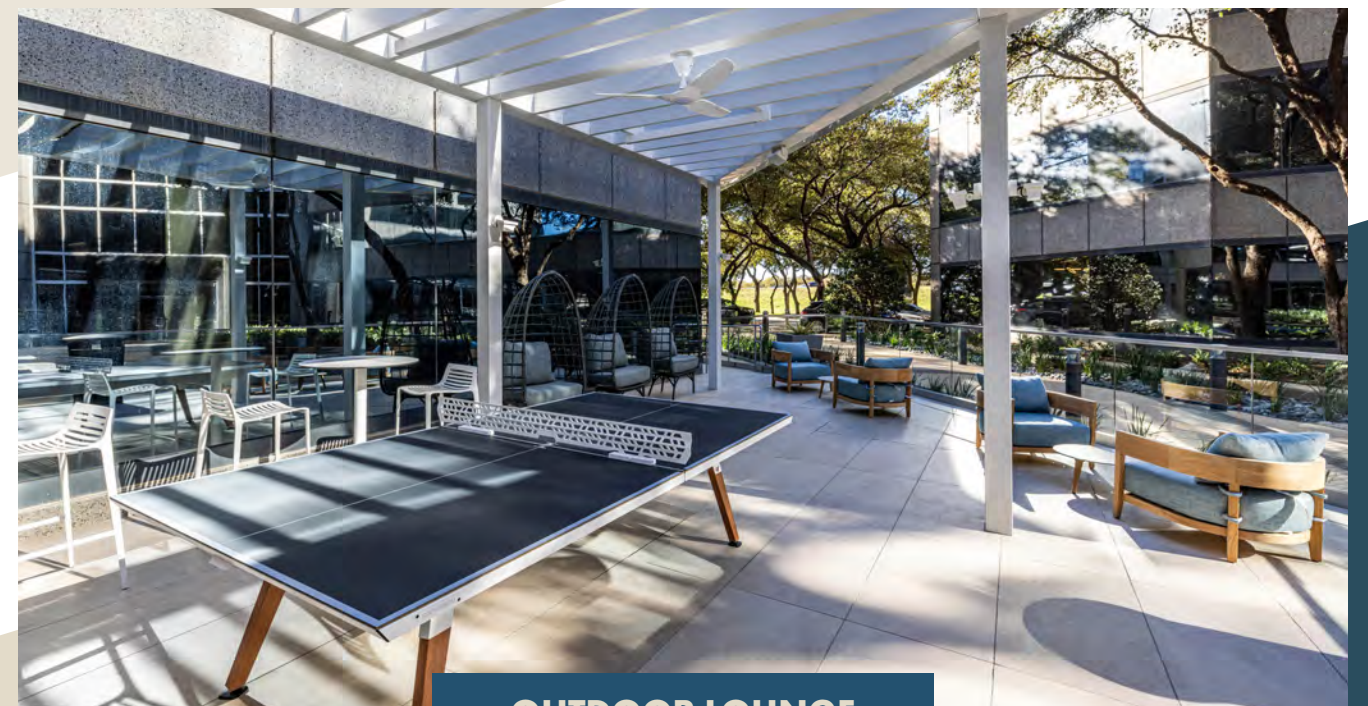
**OUTDOOR DINING**



**LOBBY**



**OUTDOOR LOUNGE**





New  
**RENOVATIONS**

**CAFE**



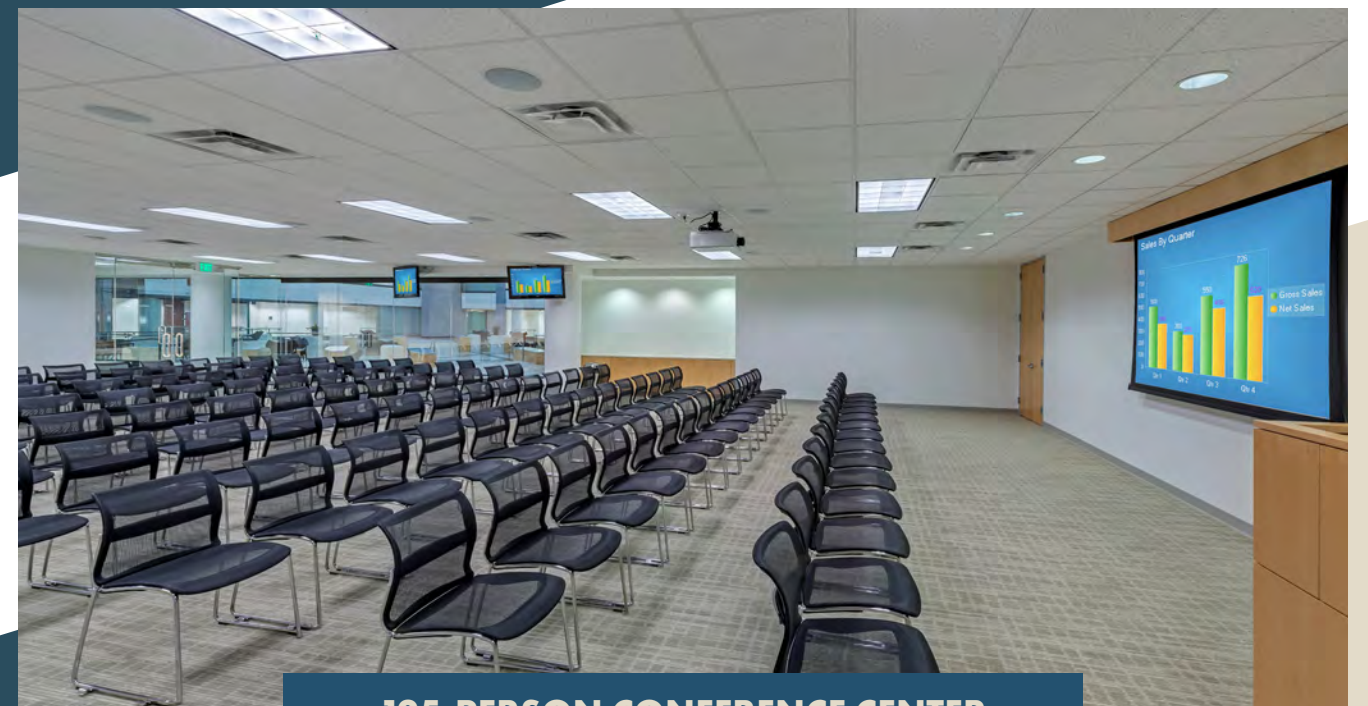
**STARBUCKS COFFEE BAR + GRAB-AND-GO**



**CAFE**



**125-PERSON CONFERENCE CENTER**



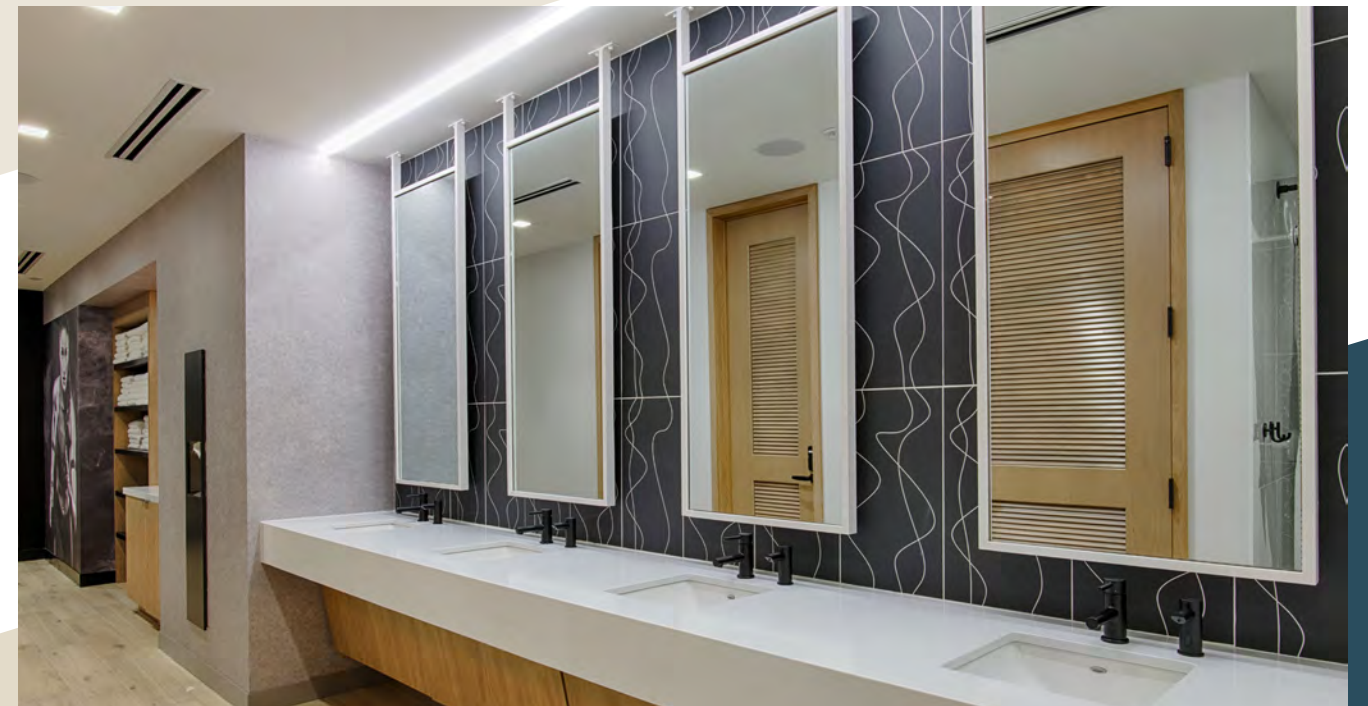


New  
**RENOVATIONS**

**FITNESS CENTER**



**LOCKER ROOMS**







# PARK WEST

**Taylor Lynch**

972.435.0514

[tlynch@forgecommercial.com](mailto:tlynch@forgecommercial.com)

**Grant Sumner**

972.435.0511

[gsumner@forgecommercial.com](mailto:gsumner@forgecommercial.com)

**Jackson Donovan**

972.435.0507

[jdonovan@forgecommercial.com](mailto:jdonovan@forgecommercial.com)

